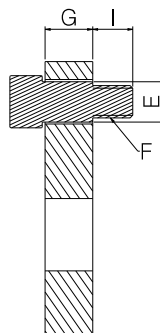
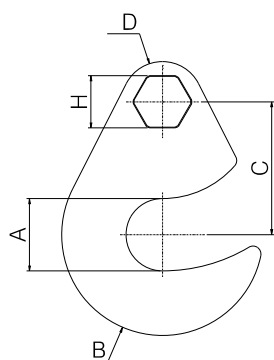
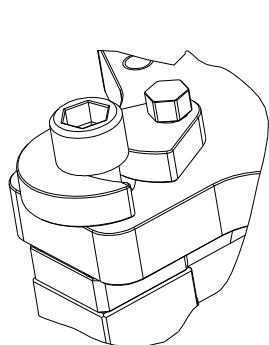


B1210 - Swing washer

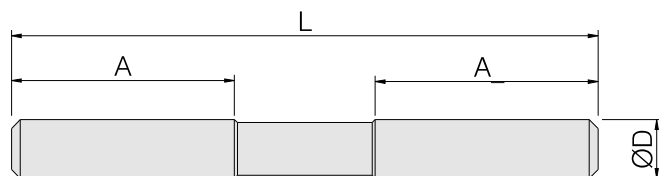
- ▶ Tempered Steel
- ▶ Ground, Blackened



Part No.	For suitable screw	A	B	C	D	E	F	G	H	I	Weight (Kg)
B1210-M10	M10	11	32	24	16	8	M6	12.8	13	10	0.078
B1210-M12	M12	13.5	40	27	20	10	M8	12.8	13	10	0.13
B1210-M16	M16	18	50	33	20	10	M8	12.8	13	10	0.18

B1221 - Clamping Stud

- ▶ Tempered steel
- ▶ Strength class 10.9
- ▶ Blackened



Part No.	ØD	L	A	Weight (Kg)
B1221-M8-075	M8	75	22	0.027
B1221-M8-100	M8	100	38	0.035
B1221-M8-150	M8	150	50	0.054
B1221-M10-075	M10	75	30	0.043
B1221-M10-100	M10	100	38	0.057
B1221-M10-125	M10	125	38	0.070
B1221-M10-150	M10	150	50	0.085
B1221-M10-175	M10	175	50	0.099
B1221-M10-200	M10	200	65	0.120
B1221-M12-075	M12	75	30	0.063
B1221-M12-100	M12	100	38	0.083
B1221-M12-125	M12	125	38	0.102
B1221-M12-150	M12	150	50	0.123
B1221-M12-175	M12	175	50	0.142
B1221-M12-200	M12	200	65	0.162
B1221-M12-250	M12	250	65	0.202
B1221-M12-300	M12	300	80	0.242
B1221-M14-100	M14	100	38	0.113
B1221-M14-150	M14	150	50	0.68
B1221-M14-200	M14	200	65	0.222
B1221-M14-250	M14	250	65	0.278

Part No.	ØD	L	A	Weight (Kg)
B1221-M16-075	M16	75	30	0.115
B1221-M16-100	M16	100	38	0.150
B1221-M16-125	M16	125	38	0.184
B1221-M16-150	M16	150	50	0.222
B1221-M16-175	M16	175	50	0.258
B1221-M16-200	M16	200	65	0.293
B1221-M16-250	M16	250	65	0.366
B1221-M16-300	M16	300	80	0.438
B1221-M20-100	M20	100	38	0.238
B1221-M20-150	M20	150	50	0.352
B1221-M20-200	M20	200	65	0.462
B1221-M20-250	M20	250	65	0.578
B1221-M20-300	M20	300	80	0.688
B1221-M20-400	M20	400	100	0.911
B1221-M20-500	M20	500	100	1.10
B1221-M24-150	M24	150	50	0.512
B1221-M24-200	M24	200	65	0.668
B1221-M24-250	M24	250	65	0.838
B1221-M24-300	M24	300	80	0.998
B1221-M24-400	M24	400	100	1.5
B1221-M24-500	M24	500	100	1.58